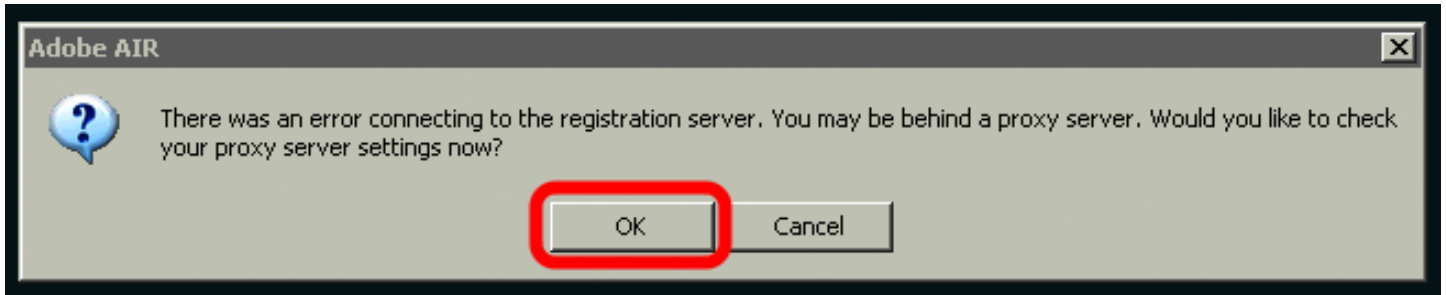




Using Market Samurai When You're Behind A Proxy Server

Error Message

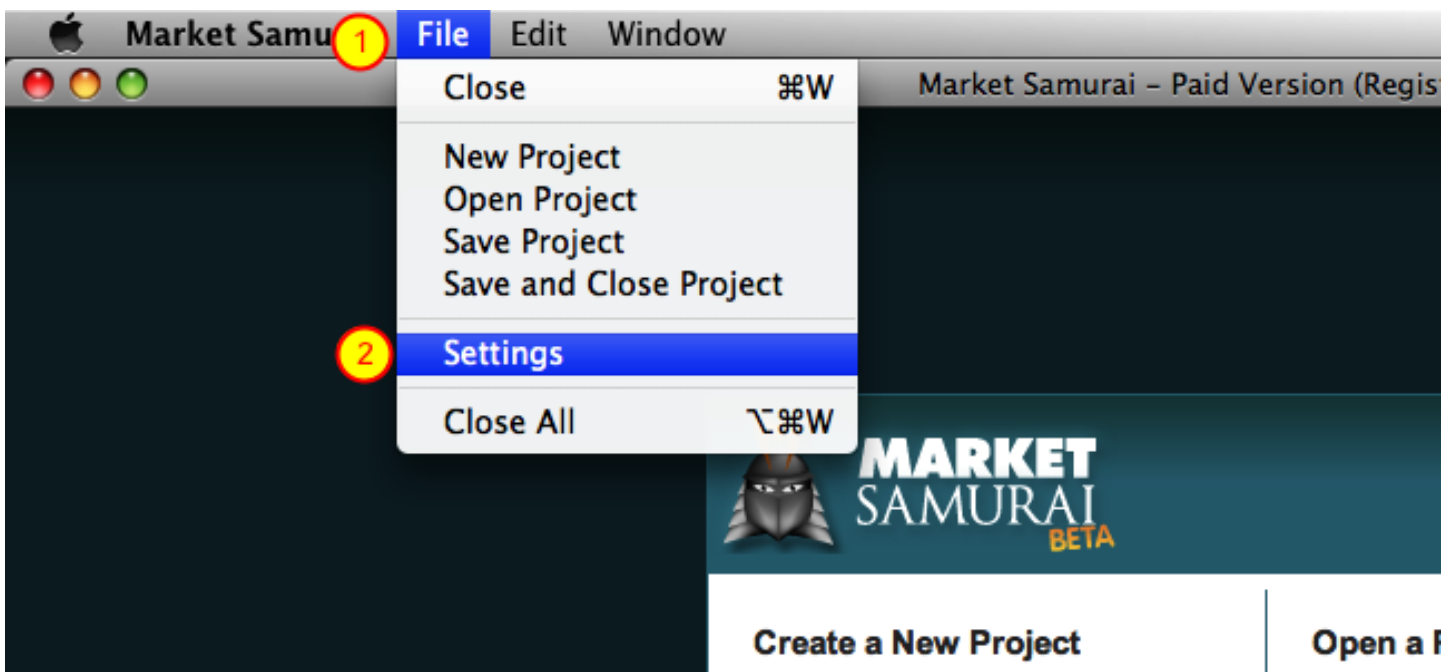


If you receive this error message, it simply means that you're behind a proxy server. To fix this you need to give Market Samurai access to the proxy server.

(Note: If you know what the proxy server details are, read on. If you don't know what they are or where to find them, read the lesson which covers finding your proxy server details.)

Click the "OK" button and go to the settings menu.

Finding The Settings Menu



To get to the settings menu:

1) Click "File"



2) Select "Settings"

Settings

The screenshot shows a web browser window titled "Configuration" for Market Samurai BETA. On the left is a sidebar menu with four tabs: "GENERAL" (briefcase icon), "PROXIES" (globe icon, highlighted with a red box), "UPDATES" (refresh icon), and "DEBUGGING" (bug icon). The main content area is titled "Proxy Settings" and contains two checkboxes: "Use built-in proxy servers" (unchecked) with the note "(Reduces possibility of being temporarily blocked)", and "Use custom HTTP proxies" (unchecked) with a value of "100" in a text box followed by "% of the time". Below these is a large text input field labeled "Proxies:" and two buttons: "Import" and "Clear".

When you're in the settings menu click on the "PROXIES" tab.



Use Custom HTTP Proxies

BETA

GENERAL

PROXIES

NOTES

LOGGING

Proxy Settings

Use built-in proxy servers
(Reduces possibility of being temporarily blocked by Google)

Use custom HTTP proxies % of the time

Proxies:

Host: Port:

Authentication required

Username:

Password:

In the settings menu, check "use custom HTTP proxies 100% of the time". This allows you to input the proxy server details into the fields below.



Proxy Server Host Address And Port Number

BETA

Proxy Settings

Use built-in proxy servers
(Reduces possibility of being temporarily blocked by Google)

Use custom HTTP proxies % of the time

Proxies:

1 **2**

Host: Port:

Authentication required

Username:

Password:

3

Enter your proxy server details here:

- 1) Enter the proxy servers host address.
- 2) Enter the proxy servers port number.
- 3) Click the add button to add the proxy server to Market Samurai's proxies list.



Security

Proxy Settings

- Use built-in proxy servers
(Reduces possibility of being temporarily blocked by Google)
- Use custom HTTP proxies % of the time

Proxies:

Import

Clear

Remove

Host: Port:

Authentication required

1) Authentication required

2) Username:

3) Password:

4)

Save

Cancel

Your proxy server may or may not be protected by a username and password. If it is you'll need to enter those details by doing the following:

- 1) Check the "authentication required" box.
- 2) Enter the proxy server "username".
- 3) Enter the proxy server "password".
- 4) Click the add button to add the proxy server to Market Samurai's proxies list.



Proxies List

BETA

GENERAL

PROXIES

DATES

DEBUGGING

Proxy Settings

Use built-in proxy servers
(Reduces possibility of being temporarily blocked by Google)

Use custom HTTP proxies % of the time

Proxies:

Host: Port:

Authentication required

Username:

Password:

1) The proxy server has now been added to Market Samurai's Proxy Server list.

2) Click the "Save" button.

You have now completed adding your proxy server to Market Samurai